









An attractive and spacious three bedroom semi-detached house with a wonderful, generous rear garden. Internally the accommodation includes to the ground floor of an entrance vestibule, an impressive reception hall with staircase to the first floor, two excellent reception rooms and a breakfasting kitchen. On the first floor there are three well-proportioned bedrooms, a modern shower room and a separate WC. The property is pleasantly set back from the road with a garden and a long driveway, there is a single garage and to the rear a delightful garden laid mainly to lawn with a patio area and established borders. This location is ideal for local amenities, shopping facilities, schools and transport links including major road networks with the A19 and A690. Available with no upper chain involved, we highly recommend arranging a viewing to appreciate this home.

MAIN ROOMS AND DIMENSIONS

Ground Floor

Access via double glazed entrance door.

Entrance Vestibule

Double glazed windows and inner door leading through to hallway.

Reception Hall



The most impressive and spacious hallway with staircase to the first floor, double glazed window to side, feature single glazed stain and lead glass window, and radiator.

Lounge 16'0" into bay x 14'2" into alcove



Double glazed bay window to front, radiator and feature fireplace with living flame effect gas fire.

Dining Room 15'1" x 12'7" into alcove

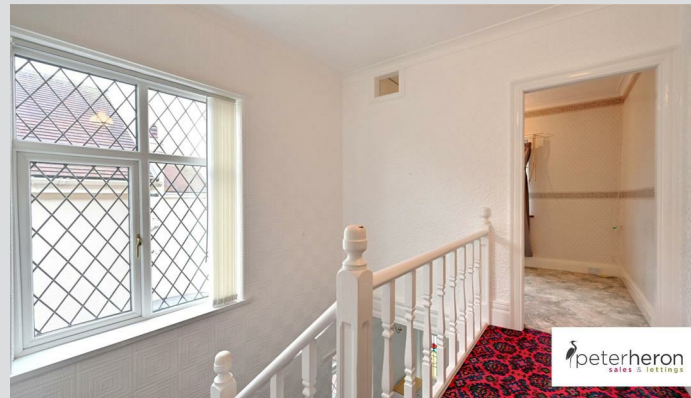
Tall double glazed windows with central double glazed door to rear patio, radiator and feature fireplace.

Breakfasting Kitchen 10'11" x 9'3"



Fitted with wall and base units with work surfaces over incorporating 1 1/2 bowl sink and drainer unit, integrated appliances include and electric oven and electric hob, space for fridge freezer and washing machine, double glazed window to rear, double glazed door to side, radiator and the central heating boiler is concealed behind kitchen unit.

First Floor Landing



Double glazed window to side.

Bedroom 1 16'4" into bay x 10'9" not including robes



Double glazed bay window to front, radiator and fitted wardrobes.

Bedroom 2 15'1" x 10'9" not including robes



Double glazed window to rear, radiator and fitted wardrobes.

Visit www.peterheron.co.uk or call 0191 510 3323

Tried. Trusted. Recommended. City Branch 20 Fawcett Street Sunderland SR1 1RH Fulwell Branch 15 Sea Road Fulwell Sunderland SR6 9BS

MAIN ROOMS AND DIMENSIONS

Bedroom 3 8'3" x 9'4"



Maximum measurements taken including fitted wardrobes, double glazed window to front and radiator.

Shower Room



Modern suite with washbasin set into vanity unit and walk in shower with mains shower, tall feature radiator, attractive tiled walls and floor, and double glazed window.

Separate WC



Low level WC, tiled walls and floor, and double glazed window.

Outside



To the front of the property there is a delightful garden with a lawn and planted borders, a long driveway providing off street parking and access to single garage. To the rear there is a wonderful generous garden laid mainly to lawn with a patio and established planted borders.

Council Tax Band

The Council Tax Band is Band D.

Tenure Freehold

We are advised by the Vendors that the property is Freehold. Any prospective purchaser should clarify this with their Solicitor.

Important Notice - Particulars

Peter Heron Ltd for themselves and for the vendors of this property whose agents they are, give notice that:-

The particulars are set out for general guidance only for the intending Purchasers and do not constitute part of an offer or contract. Whilst we endeavour to make our sales particulars accurate and reliable, if there is anything of particular importance which you feel may influence your decision to purchase, please contact the office and we will be pleased to check the information. Do so particularly, if contemplating travelling some distance to view the property. All descriptions, dimensions, references to conditions and necessary permissions for use and occupation and other details are given in good faith, and are believed to be correct, however any intending purchasers should not rely on them that statements are representations of fact, but must satisfy themselves by inspection or otherwise as to the correctness of each of them. Independent property size verification is recommended.

Lease details, service charges and ground rent (where applicable) are given as a guide only and should be checked and confirmed by your Solicitor prior to exchange of contracts. No person in the employment of Peter Heron Ltd has any authority to make or give any representation or warranty whatever in relation to this property or these particulars, nor to enter into any contract on behalf of Peter Heron Ltd, nor into any contract on behalf of the Vendor. The copyright of all details and photographs remain exclusive to Peter Heron Ltd.

Please note that in the event the purchaser uses the services of Peter Heron Conveyancing in the purchase of their home, Peter Heron Ltd will be paid a completion commission of £300.00 by Movewithus Ltd.

Fawcett Street Viewings

To arrange an appointment to view this property please contact our Fawcett Street branch on 0191 510 3323 or book viewing online at peterheron.co.uk

Opening Times

Monday to Friday 9.00am - 5.00pm Saturday 9.00am - 12noon

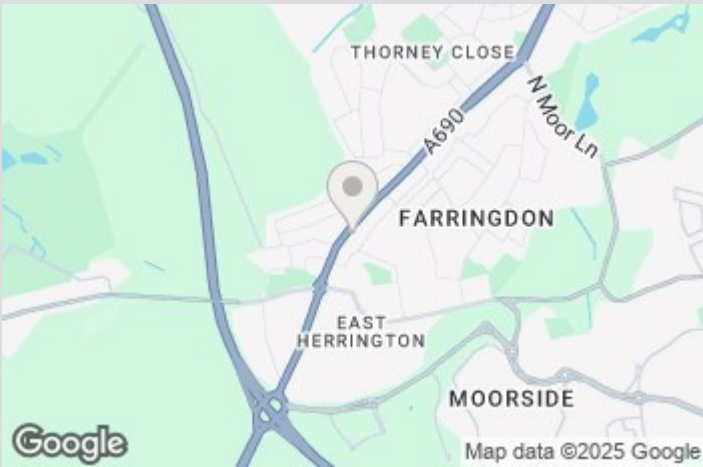
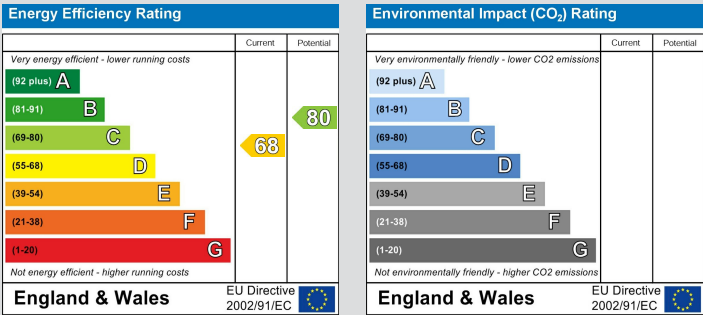
Ombudsman

Visit www.peterheron.co.uk or call 0191 510 3323

Tried. Trusted. Recommended. City Branch 20 Fawcett Street Sunderland SR1 1RH Fulwell Branch 15 Sea Road Fulwell Sunderland SR6 9BS

MAIN ROOMS AND DIMENSIONS

Peter Heron Estate Agents are members of The Property Ombudsman and subscribe to The Property Ombudsman Code of Practice.



Visit www.peterheron.co.uk or call 0191 510 3323

Tried. Trusted. Recommended. City Branch 20 Fawcett Street Sunderland SR1 1RH Fulwell Branch 15 Sea Road Fulwell Sunderland SR6 9BS

